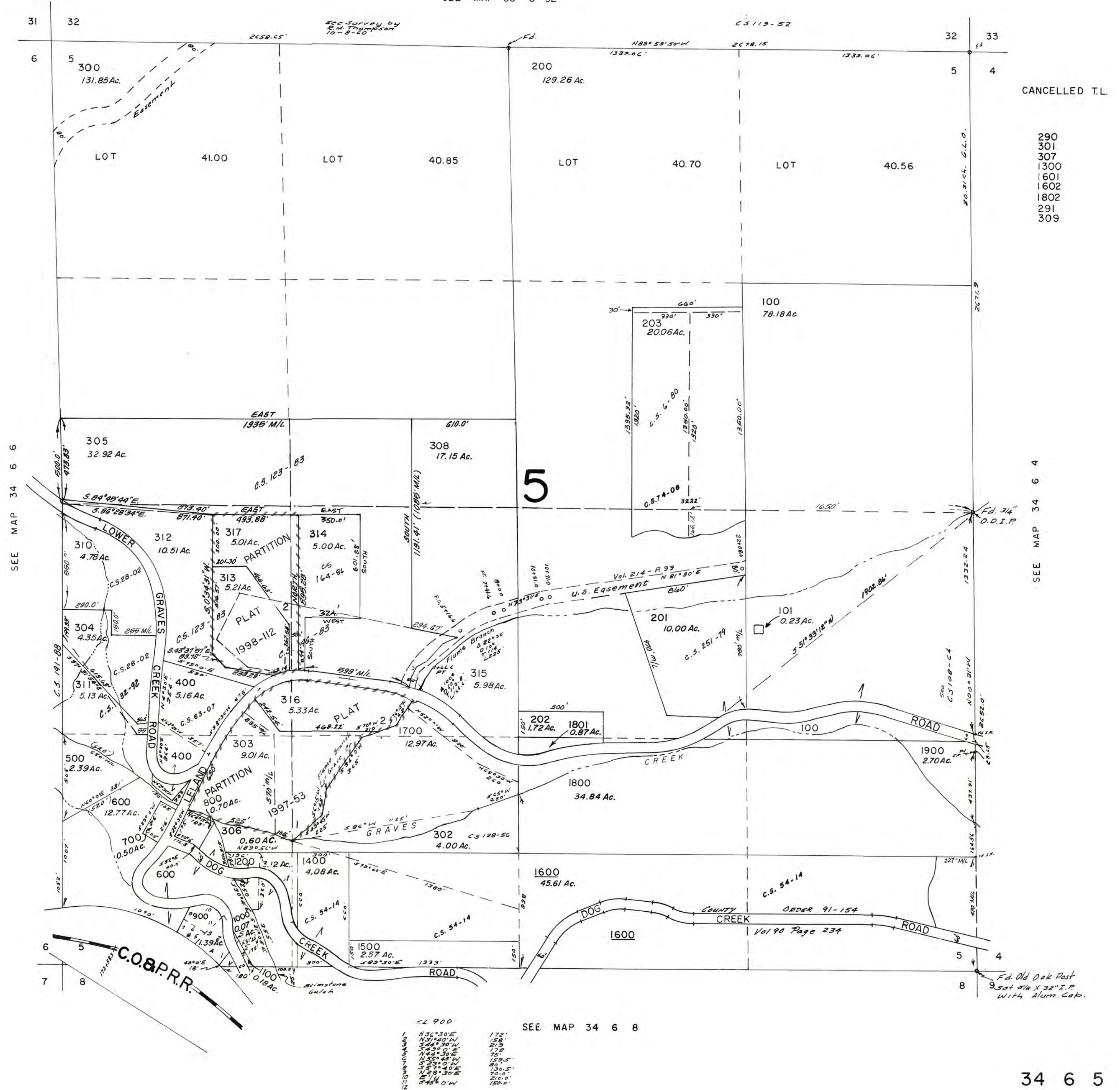


JOSEPHINE COUNTY

1" = 400'

This map was prepared for assessment purpose only.

SEE MAP 33 6 32



CANCELLED T.L.

- 290
- 301
- 307
- 1300
- 1601
- 1602
- 1802
- 291
- 309

SEE MAP 34 6 6

SEE MAP 34 6 4

SEE MAP 34 6 8

| | | |
|----|----------|--------|
| 1 | N36°30'E | 172' |
| 2 | N51°40'W | 158' |
| 3 | S44°30'W | 213' |
| 4 | S44°30'W | 170' |
| 5 | N44°30'E | 75' |
| 6 | N55°40'W | 159.5' |
| 7 | S29°10'W | 80' |
| 8 | S30°5'W | 130.5' |
| 9 | N28°30'E | 70.0' |
| 10 | S71°10'W | 210.0' |
| 11 | S75°0'W | 180.0' |
| 12 | S75°0'W | 180.0' |