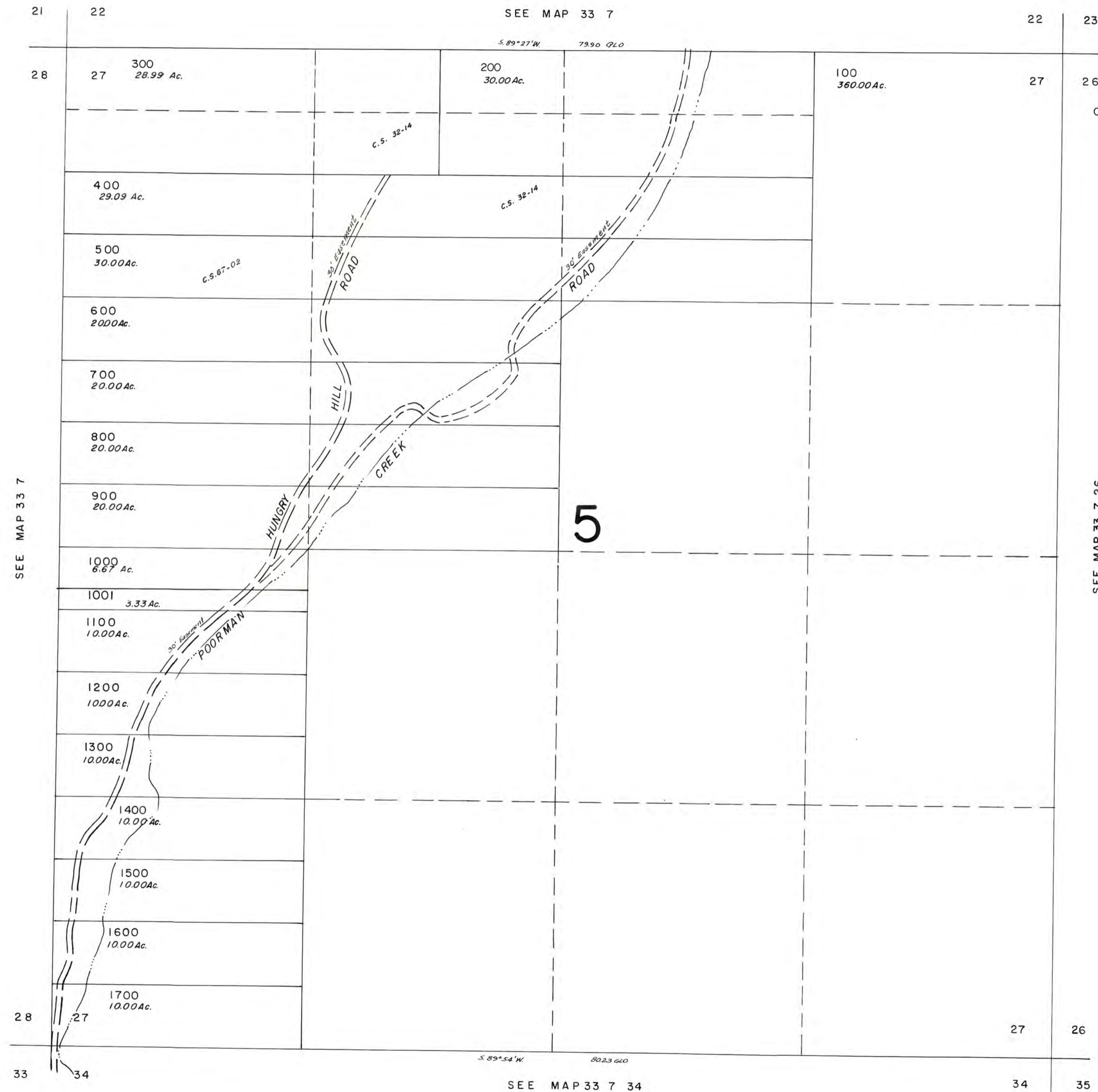


JOSEPHINE COUNTY

1" = 400'

This map was prepared for assessment purpose only.



- CANCELLED T.L.
- 700-90
 - 390
 - 290
 - 1001-30
 - 1700-30
 - 200-90
 - 400-90
 - 500-90
 - 600-90
 - 800-90
 - 900-90
 - 1000-90
 - 1100-90
 - 1200-90
 - 1300-90
 - 1400-90
 - 1500-90
 - 300-90

SEE MAP 33 7

SEE MAP 33 7 26

5

SEE MAP 33 7 34